



SMALL WONDER

CATHERINE CLANCY

Using clever curves and cottage planting to lift a tired urban garden

PROJECT DETAILS

Project value
£15k

Build time
One year

Size of project
75sq m

This dreary north-facing London back garden was transformed into a pretty space with large flowering borders, a lawn and a seating area at the sunny end.

The clients were doing some major renovations to their home, including a new kitchen extension, and wanted to upgrade the garden to suit the changes and also to make much more of the outside space. The landscaping was carried out at the same time as the house renovations.

This garden was like many other London gardens, long, thin, behind a terraced Victorian property, and somewhat overlooked by houses to the back. The existing garden was tired and dull, with some odd raised beds, dark concrete paving, very little good planting and a scruffy lawn. A raised deck area at the back was falling apart. An ash tree that had grown too big needed to be removed.

The brief

The clients love gardening, and wanted the garden to have a good structure, and requested that the new design disguise the long, thin shape. The garden is accessed via the kitchen, which is about 800mm below the

garden level, so a flight of steps needed to be designed to lead from the kitchen up to a patio.

The clients required a lawn, pretty borders filled with flowering shrubs and perennials to provide year-round colour and give a natural cottage look, and a herb bed near the kitchen door.

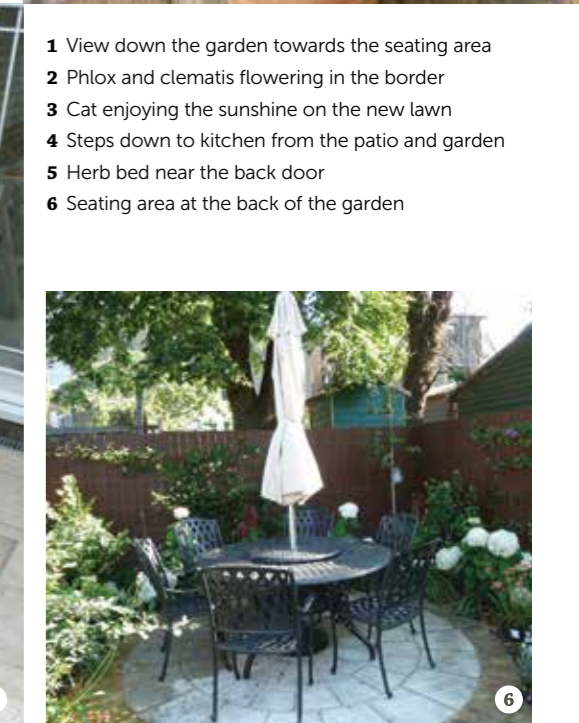
They enjoy entertaining and wanted a paved area big enough to hold a six-seater table, preferably at the back of the garden where they could view the garden and the house. They also wanted a small bench somewhere in the garden near the kitchen.

A shed or some storage for garden tools was needed. Lights were also required so the garden could be used in the evening, and to enhance the planting.

Materials and build

Materials used in the landscaping needed to be in keeping with the design of the new extension, and the house, which is in a conservation area. Paving for the area outside the kitchen door needed to be bright and hardwearing, ie suitable for a shady basement.

The garden was designed with a circular seating area at one end, which led the curved shape theme. London stock bricks were used →



- 1 View down the garden towards the seating area
- 2 Phlox and clematis flowering in the border
- 3 Cat enjoying the sunshine on the new lawn
- 4 Steps down to kitchen from the patio and garden
- 5 Herb bed near the back door
- 6 Seating area at the back of the garden



Plant list

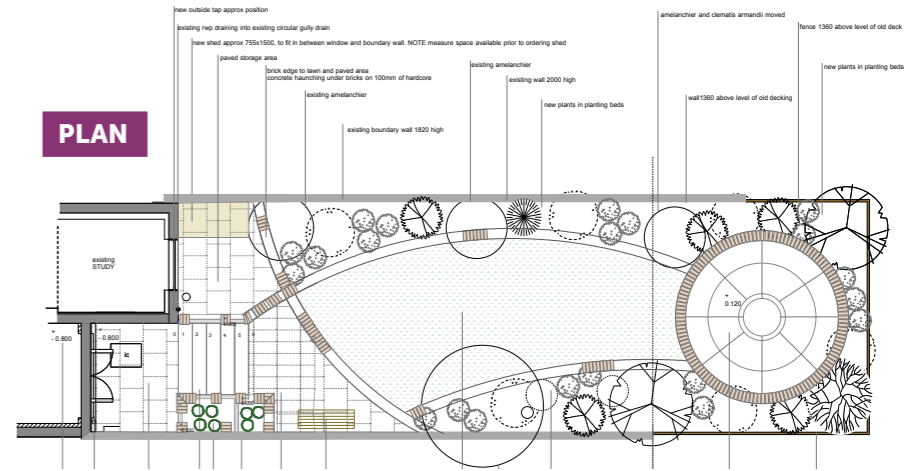
- Trees**
- Malus x atrosanguinea 'Gorgeous'
 - Magnolia Grandiflora standard
 - Magnolia stellata 'Royal Star'
 - Prunus 'Spire'
- Shrubs**
- Abelia x grandiflora
 - Existing Amelanchier lamarckii
 - Buxus Sempervirens ball
 - Camellia x williamsii 'Debbie'
 - Camellia japonica 'Margaret Davis'
 - Chaenomeles japonica
 - Choisya x dewitteana 'Aztec Pearl'
 - Hydrangea arborescens 'Annabelle'
 - Philadelphus 'Manteau d'Hermine'
 - Rosa 'Kew Gardens'
- Climbers**
- Rosa 'Claire Austin'
 - Rosa 'The Generous Gardener'
 - Rosa 'Gertrude Jekyll'
 - Rosa 'A Shropshire Lad'
 - Trachelospermum jasminoides
 - Clematis viticella mixed to grow through shrubs – not shown on plan
- Perennials**
- Agapanthus praecox 'Blue Storm'
 - Anemone x hybrida 'Honorine Jobert'
 - Chrysanthemum 'Emperor of China'
 - Convallaria majalis (lily of the valley)
 - Digitalis purpurea 'Pam's Choice'
 - Geranium 'Ann Folkard'
 - Geranium 'Johnson's Blue' or 'Nimbus'
 - Helleborus niger
 - Lavandula angustifolia 'Hidcote'
 - Omphalodes cappadocica 'Cherry Ingram'
 - Phlox paniculata 'Cosmopolitan'
 - Phlox paniculata 'White Admiral'
 - Polystichum tsussimense
- Bulbs**
- Narcissus 'Thalia' and papyraceus 'Ziva'
 - Muscari armeniacum
 - Allium hollandicum 'Purple Sensation'
 - Crocus tommasinianus 'Whitewell Purple'
 - Hyacinthoides non-scripta (English bluebells)
 - Tulips



to define the edges, as they tied the garden in with the house walls. The brick lawn border also provided a good mowing edge. Yellow hammered granite was used as the primary paving stone, as it weathers well in shady corners, is bright in a basement patio area and also matches well with London stock bricks. The steps from the basement were clad with yellow hammered granite to create the 'clean look' the clients were after.

Finally, a drip hose irrigation system was installed to provide enough water in the dry London environment.

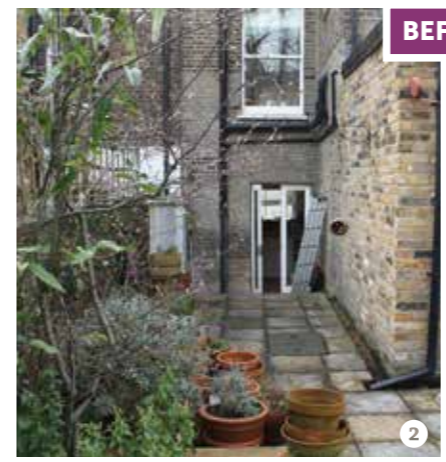
- 1 Small shed made to measure
- 2 Original garden
- 3 Landscaping work in progress
- 4 Original garden
- 5 Landscaping complete, ready for planting
- 6 Laying the circular seating area



ABOUT CATHERINE CLANCY

Since 2005, Catherine has created high quality, beautifully planted, functional outdoor spaces, focusing on making the most of the garden area available in small London gardens. Her practice focuses on design excellence, a down to earth attitude and collaboration. Although small town gardens and courtyards are her speciality, she has also designed larger family gardens, edible, front and country gardens. Catherine studied garden design at the English Garden School and the RHS Dip Hort at Hadlow College.

www.catherineclancy.com

REFERENCES

Designer
Catherine Clancy
 43 Vanbrugh Park,
 London SE3 7AA
www.catherineclancy.com

Contractor
Geo Contracts Ltd
 Brigade House,
 Brigade Street,
 Blackheath,
 London SE3 0TW
 Tel 020 8852 7654;
 07769 775144
 Email info@geo-contracts.co.uk

Yellow hammered granite paving stone
CED Stone Group
www.ced.ltd.uk

Bricks
Travis Perkins
www.travisperkins.co.uk

Soil, shrubs, trees
Provender Nurseries Ltd
www.provendernurseries.co.uk

Herbaceous plants
How green nursery
www.howgreennursery.co.uk

Lighting
National Lighting
www.nationallighting.co.uk